

PhG-TD Series

Epoxy cast resin dry-type transformers

(IEEE standard)



Epoxy casting dry-type transformers is widely used in the load center of power supply and distribution of residents and enterprises because of its fireproof, flame retardant, explosion-proof safety performance, as well as strong overload capacity and other significant advantages, which is mainly used in office buildings, airports, district power distribution rooms, shopping malls and hotels, data centers and other places. It can be used as a step-up transformers to raise the voltage on the power generation side and deliver it through high-voltage lines, and it can also be used as a step-down transformers to reduce the high-voltage to low-voltage on the power distribution side.

PRODUCT INTRODUCTION

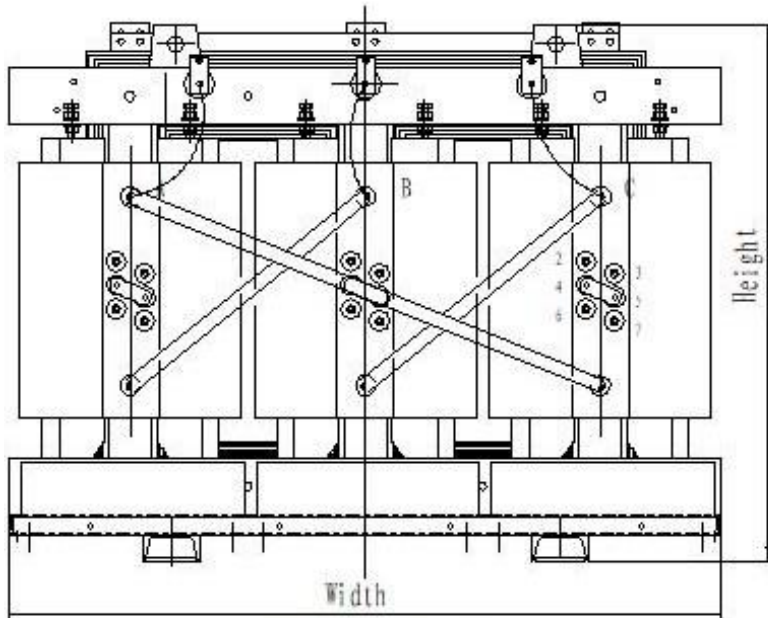
- **Rated Output kVA:** 6750/5000/3750/3150/3000/2750/2500/2000/1750/1500.
- **Vector Group :** Dyn1/Dyn11/Dy1
- **Primary voltage(kV):** 34.5/33/24.9/15/14.4/13.8/13.2/12.47.
- **Secondary voltage: (kV):** 0.69/0.6/0.48/0.416/0.24/0.208.
- **Frequency:** 60 Hz or 50 Hz
- **Temp Rise:** 239 °F(115 °C)
- **Certifications:** UL (standard); CSA (optional)
DOE 10 CFR Part 431

*Note: If you need more detail data, please contact us.

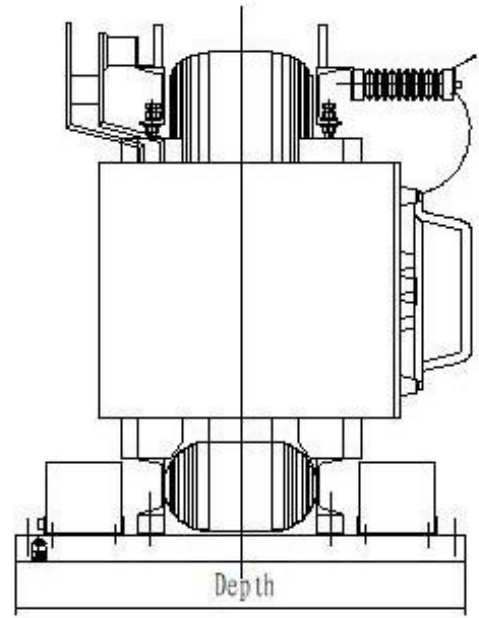
Version V1.0

PhG-Td Series Dry type transformer

Outline & Approximate Dimensions



FRONT VIEW (HV SIDE)



LEFT VIEW (HV SIDE)

kVA	Width(in)	Depth(in)	Height(in)	Weight (Lbs)
1500	68	46	55	8,820
2000	72	46	60	10,580
2500	74	46	62	12,560
3000	84	62	83	17,630
3750	88	62	84	20,280
5000	102	62	91	26,450



Low loss



UL Listed



High Temperature
Adaptability



Data Center
Industrial Park
Application